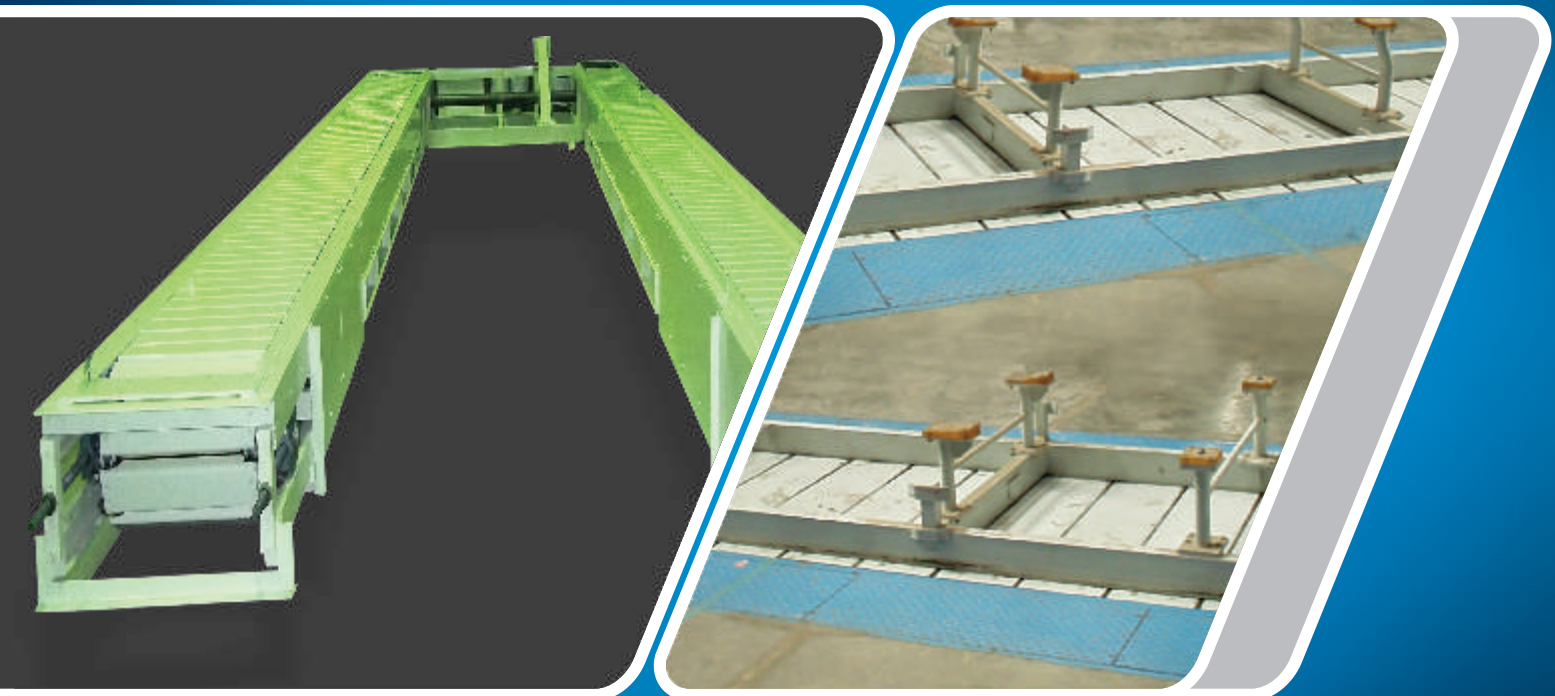


Slat Conveyor

- **A robust and reliable system for variety of applications**
- **Can handle unit weight up to 10000 Kgs**
- **Extensively used in assembly & production, shower and inspection lines**
- **Special belts are used to avoid rust and corrosion**



These are extremely robust and reliable systems with capabilities to deliver dependable performance for a long period and are designed to offer minimum down time and cost on maintenance. The conveyors are used for wide industrial applications right from raw material handling to finished goods handling and management.

They are extensively used at various stages in the manufacturing and assembly processes in automobile and engineering industries.

The slat conveyors have slats attached to double strand steel side bars with bushed & bearing roller chains and are available in all width, lengths and heights to suit different applications as per the

customer's requirement.

The conveyors can be made flushed to floor level to facilitate hindrance free man movements. The operators can walk along the conveyor lines during operations; thus saving on the process cycle time and contributing to increase in productivity.

Specially designed slat conveyors are used for unique applications like for hot metal handling, for shower test lines and inspection lines in car manufacturing, wherein suitable; metallic and non-metallic belt material are used to avoid warpage, rust and corrosion of the belts.

Features:

- Type of slat is determined by size, weight & properties of product conveyed.
- Offers a continuous moving surface to which clamping fixtures can be provided to accommodate the item.
- Speeds determined by production rate & set by preceding & following operations.
- Conveyors known for long production life & least amount of maintenance & repair.
- Conveyors are available in different width.

Applications:

- Vehicle assy line including Tractor / Earthmoving equipments.
- Engine, Transmission, Axle, Gearbox & other sub assy line.
- Car Shower leakage testing lines.
- Inspection lines.
- Whitegoods assembly / inspection line.
- Carton box handling.
- Hot metal handling.

Benefits:

- All steel construction & robust.
- Quiet operation.
- Can handle multiple products.
- Wide slat facilitates man movement along with the conveyor.
- Flush to the floor design, No obstructions for man movements.
- Long life of chain and lower maintenance.
- Easy to modify the fixture parts to suit changes in the products handled.
- Rust & corrosion can be avoided using POM belts.

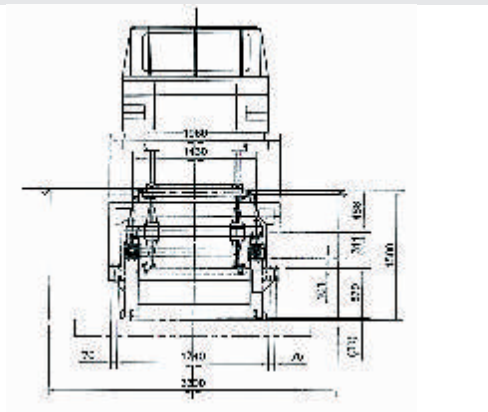
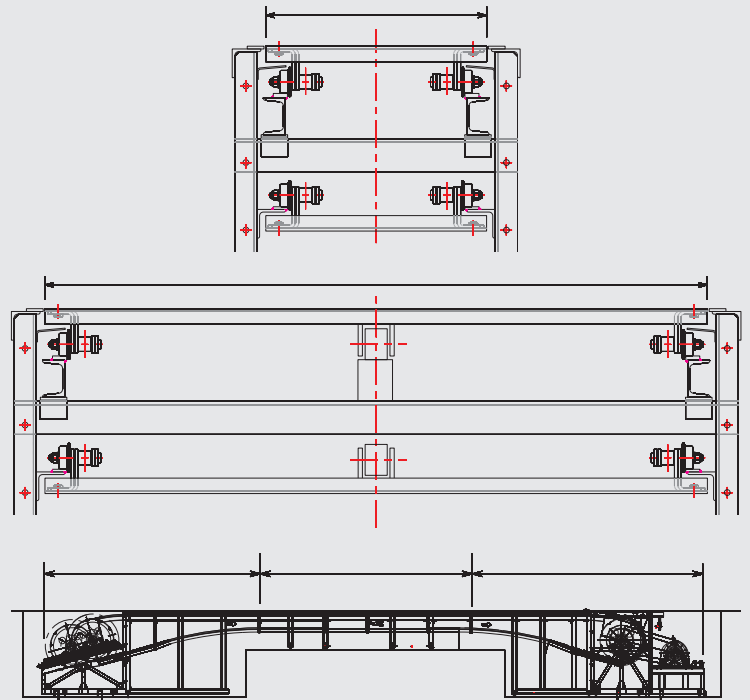


Technical Data :

Slat conveyors are designed as per customer required width, length and heights.

The chains used in our conveyor systems are especially designed, engineered and manufactured by us to suit various applications.

On customer demand, we also use chains and belts with standard configurations; from reputed manufacturers.



We Move Manufacturing...

AUTOMAG INDIA PRIVATE LIMITED

Regd. Office: Plot No 25, Survey No. 1,
Aamchi Colony, Bavdhan, Pune 411 021, India.
Tel.: +91 20 2295 1182 / 83 / 84 / 85 Fax: +91 20 2295 1187
sales@automagindia.in | www.automagindia.com